

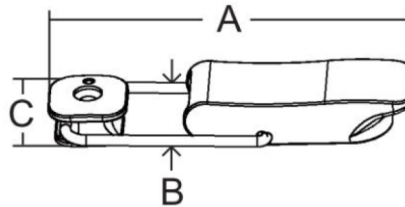
## GM-POCL Stainless Steel 316 Position Over Center Latch

### Features

- New contemporary design
- Spring loaded cam over latch
- Wire loop can stay in any position when unlatched
- Catch tension can be adjusted up to 5.7mm by rotating the strike and resetting the housing
- Uses screw size #8

### Material

- Stainless steel 316



Part No.	A	B	C
GM-POCL-A107895	100.6	31.5	11.5

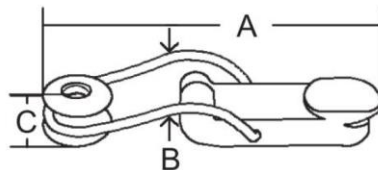
## GM-COL Stainless Steel 316 Cam Over Latch

### Features

- Elongated wire loop is tensioned when latched
- Easy installation and superior performance
- Uses screw size #8

### Material

- Stainless steel 316



Part No.	Type	A	B	C
GM-COL-J121590	Non Locking	94	29	13
GM-COL-J121592	Locking			

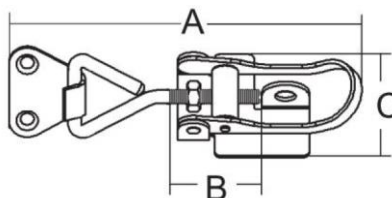
## GM-HF Stainless Steel 316 Hatch Fastener

### Features

- Over center cam action
- Length can be adjusted via threaded stem
- Uses screw size #8

### Material

- Stainless steel 316



Part No.	A	B	C
GM-HF-I623016	98	25	26
GM-HF-I933084	155	49.5	40